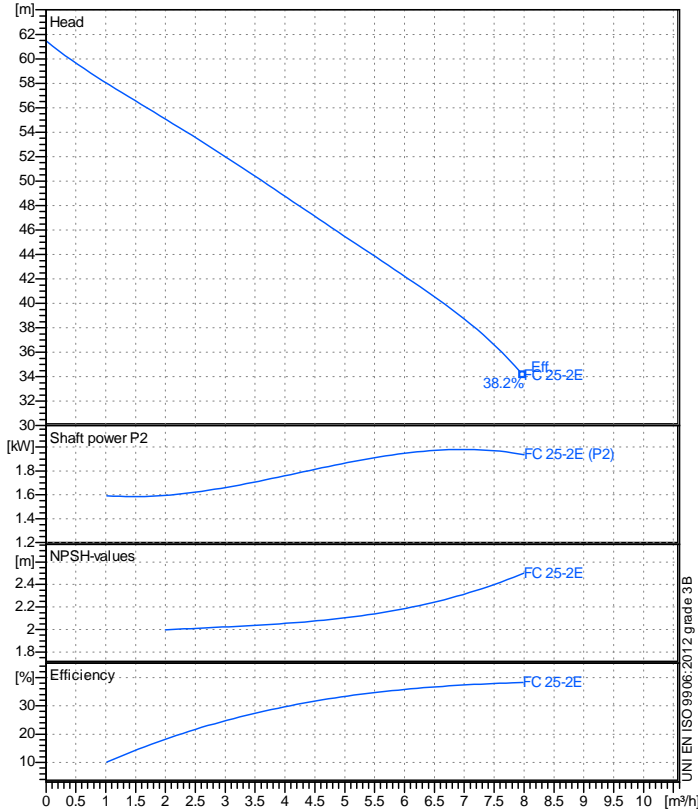


Company name
Respons. Department
Person in charge
Phone number
Fax no
E-mail address

Receiver

From

SAER Elettropompe Spa



Operating data specification

Nominal flow	m³/h	0
Nominal head	m	0
Static head	m	0
NPSH - v alue of plant	m	0
Inlet pressure	bar	0.09793
Fluid	Water, pure	
Operating temperature t A	°C	20
Density at t A	kg/dm³	0.9983
Kin. viscosity at t A	mm²/s	1.005

Pump

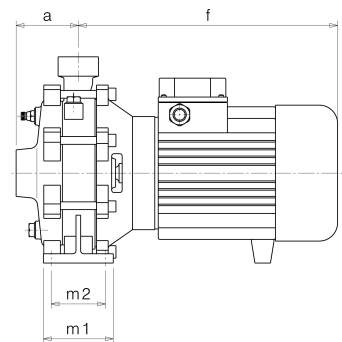
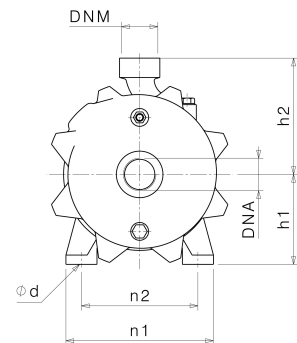
Pump name	FC 25-2E			
Size				
Design				
Speed	1/min	2850	No of stages	2
Impeller type				
Flow	Nominal	m³/h		
	Max-	m³/h 8		
	Min-	m³/h 0.0036		
Head	Nominal	m		
	Max-	m 61.5		
	Min-	m 34.1		
Head H(Q=0)	m 61.5			
NPSH 3%	m			
Max. working pressure	bar 6.02			
Shaft power	kW			
Efficiency	%			
Max absorbed power	kW 1.9809			

Materials Pump

Shaft	Stainless steel AISI 431 (1.4057)
Impeller	Brass
Pump body	Cast iron EN-GJL-200
Support	Aluminium
OR	NBR Rubber
Mechanical seal	BXPG (Gra/Cer/NBR)

Dimensions in mm

a	80
DNA	G 1 1/4"
DNM	G 1"
f	301
h1	115
h2	150
m1	90
m2	70
n1	190
n2	150
ød	12



Motor	Frame size	90 S		
Manufacturer / Type	SAER 90 S 2 - 1,5 1~			
Rated power	kW	1.5	Efficiency 4/4	0 %
Electric current	A	11.5 A	Speed	1/min 2950
Electric voltage	V	230 V	1~	Hz 50
Starting mode	Unknown			
Degree of protection	IP 44	Insulation class	F	

Remarks:

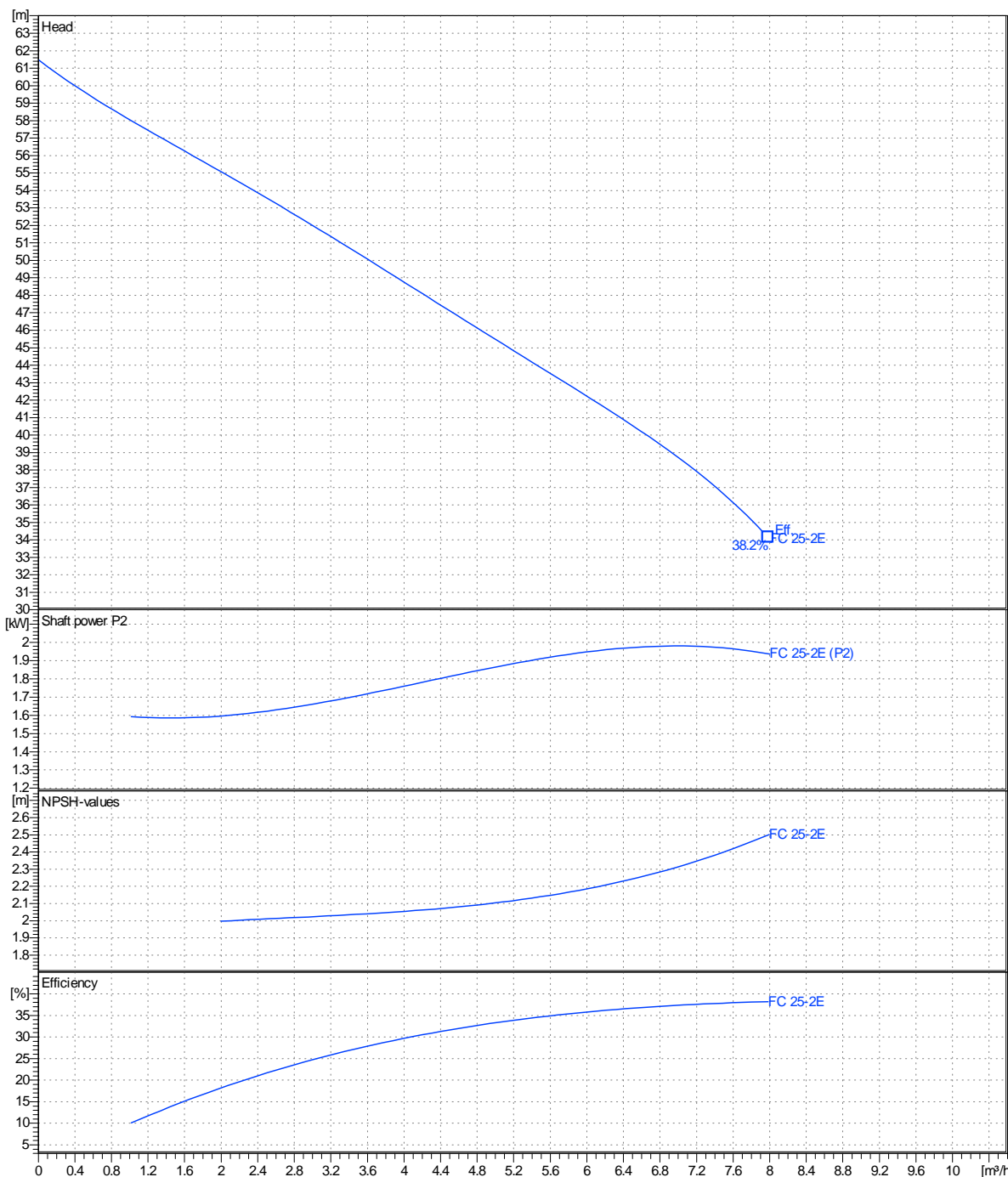
Project	Project ID	Created by	Created on 18/08/2023	Last update
---------	------------	------------	---------------------------------	-------------

Receiver	From
Company name	SAER Elettropompe Spa
Respons. Department	
Person in charge	
Phone number	
Fax no	
E-mail address	

Operating area	Flow	Head	Impeller type
Operating data specification	0 m ³ /h	0 m	Impeller construction
Pump data	m ³ /h	m	Sense of rotation
			Clockwise from the drive end
			Outlet width
			G1"
	Flow	Head	Shaft power P2
	Min. Max. η Max.	H(Q=0) η Max.	P2(Q=0) Max. η Max.
	m ³ /h m ³ /h m ³ /h	m m	kW kW kW
	0.0036 8 7.98	61.5 34.1	1.98 1.94
			Speed 1/min 2850
			Frequency Hz 50 Hz

Performance data based to: Water, pure [100%]; 20°C; 0.998kg/dm³; 1mm²/s

UNI EN ISO 9906:2012 - Grade 3B



Project	Project ID	Created by	Created on	Last update
			18/08/2023	